

St. Joseph, MO has many interesting places to visit. Join the group April 26-28 for a very informative and fun meeting. For additional information and registration forms, go to [www.jeffersonhighway.org](http://www.jeffersonhighway.org).

# MUSEUM HILL HISTORIC DISTRICT

Map showing the layout of the Museum Hill Historic District with streets labeled: Jules Street, Francis Street, Park Street, Edmond Street, Charles Street, Sylvia Street, Agriport Street, Pius Street, Youth Street, Stewart Street, North Street, and Phoenix Street. A central area is highlighted with a blue border and contains a small photograph of the Wyeth-Tootle Mansion. Various points of interest are marked with letters A through Q.

Compass rose: N (North), S (South), E (East), W (West).

A. Wyeth-Tootle Mansion	J. Francis Browne House
B. Carriage House	K. George C. Hax Mansion & Carriage House
C. Vineyard Mansion & Carriage House	L. Charles Ebert Residence
D. Frederick A. Franks House	M. The Empty Corner Lot
E. Major Samuel Garth House	N. Frederick Henshaw House
F. North Goermann Duplex & South Goerman Duplex	O. Joseph Corby Mansion & Conservatory
G. Henry Smith Bungalow	P. Henry Hansen House
H. Lyman W. Forgrave House	Q. Lee Patillo Ranch House
I. Sheehan-Horton House	



**Checotah, Oklahoma -- probably prior to 1910. A Jefferson Highway town!#jha**



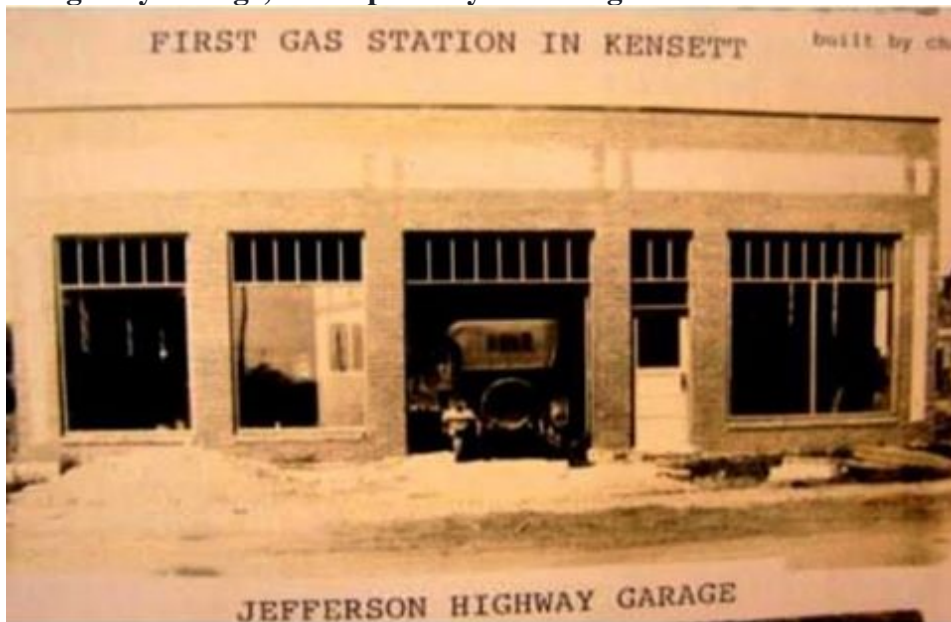
**Jefferson Highway**

Published by Glenn Smith · May 3, 2017 ·

Street scene in Checotah, Oklahoma. This is probably before statehood when it was Indian Territory. No date on the scan, but estimated about 1900. Many of the old buildings in Checotah have survived and this is a town to visit. They have two small museums and other attractions. Checotah was an important town on the Jefferson Highway.



**The Jefferson Highway Garage, and reportedly the first gas station built in Kensett, Iowa. #jha**



Downtown Cameron MO on May 30, 1924. This photo was taken one block west of the Jefferson Highway going through Cameron. It's hard to see but if you look just past the 3rd US flag on the left you can see a utility pole that has the JH Pole Marking on it. The JH Crossed at that intersection and the road we see going straight ahead is the Pikes Peak Ocean to Ocean highway. The fountain you see in the middle of the road was in the intersection of the JH and PPOO.



The Big Pump Gas Station will be seen on the bus tour as part of the Jefferson Highway Conference. Join us as we follow part of this section of the historic highway. #jha

Steam Laundry - Cameron, Missouri



Jefferson Highway - Cover of Tourist Guide Book. #jha

---

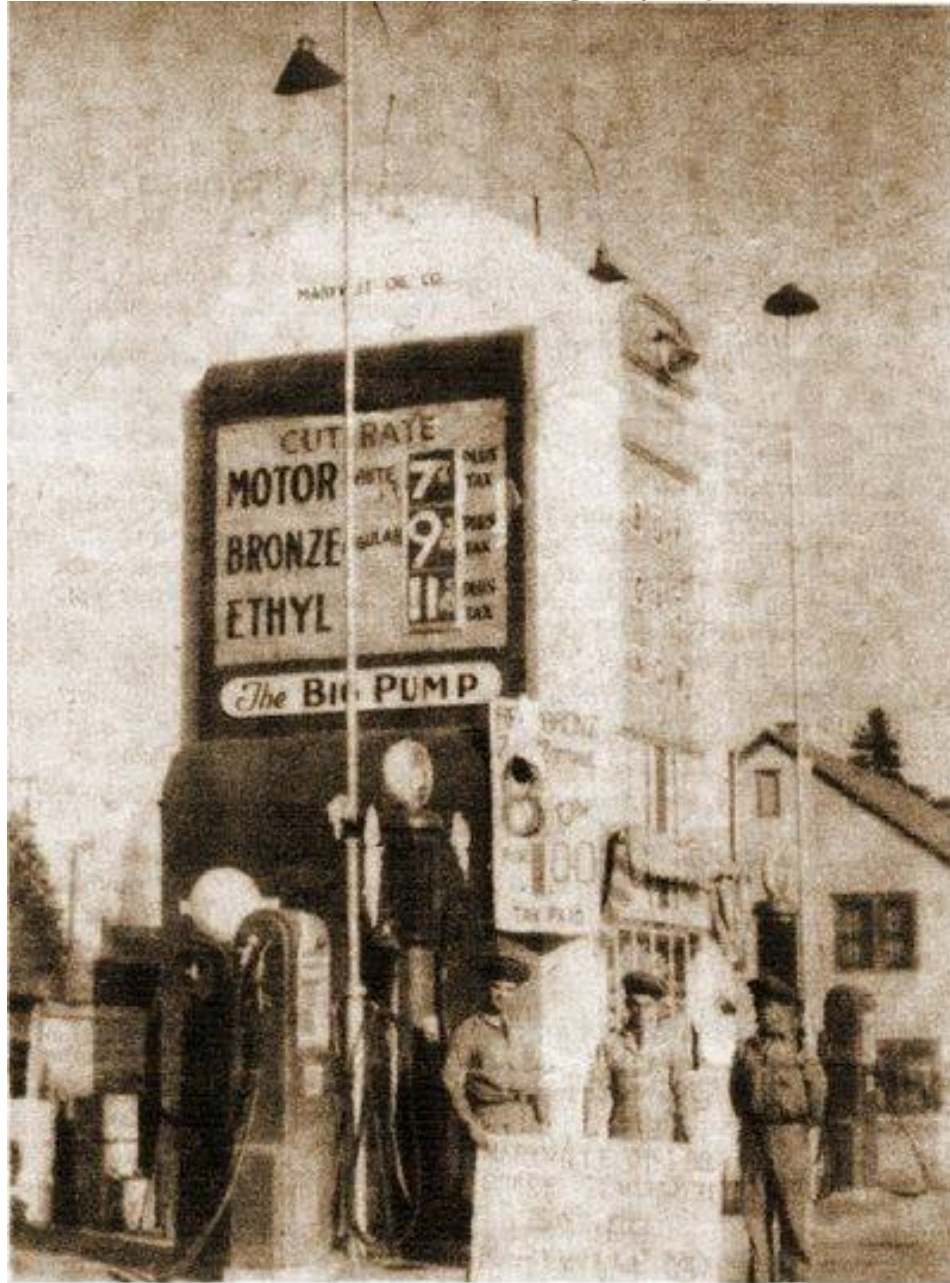
EXPERT REPAIRING—ACCESSORIES—PROMPT SERVICE is guaranteed by  
**The Inter-State Garage Company**  
LAMONI, IOWA                      EAGLEVILLE, MISSOURI  
*Both on the Jefferson Highway*  
Distributors of VEEDOL OILS AND GREASES—FISK AND MARATHON TIRES  
*Ladies Rest Room in Connection*

---

Ad from the JH Magazine—October 1916



Advertisement from the Jefferson Highway magazine October 1916 - Eagleville, MO and Lamoni, Iowa.  
"Both on the Jefferson Highway." #jha

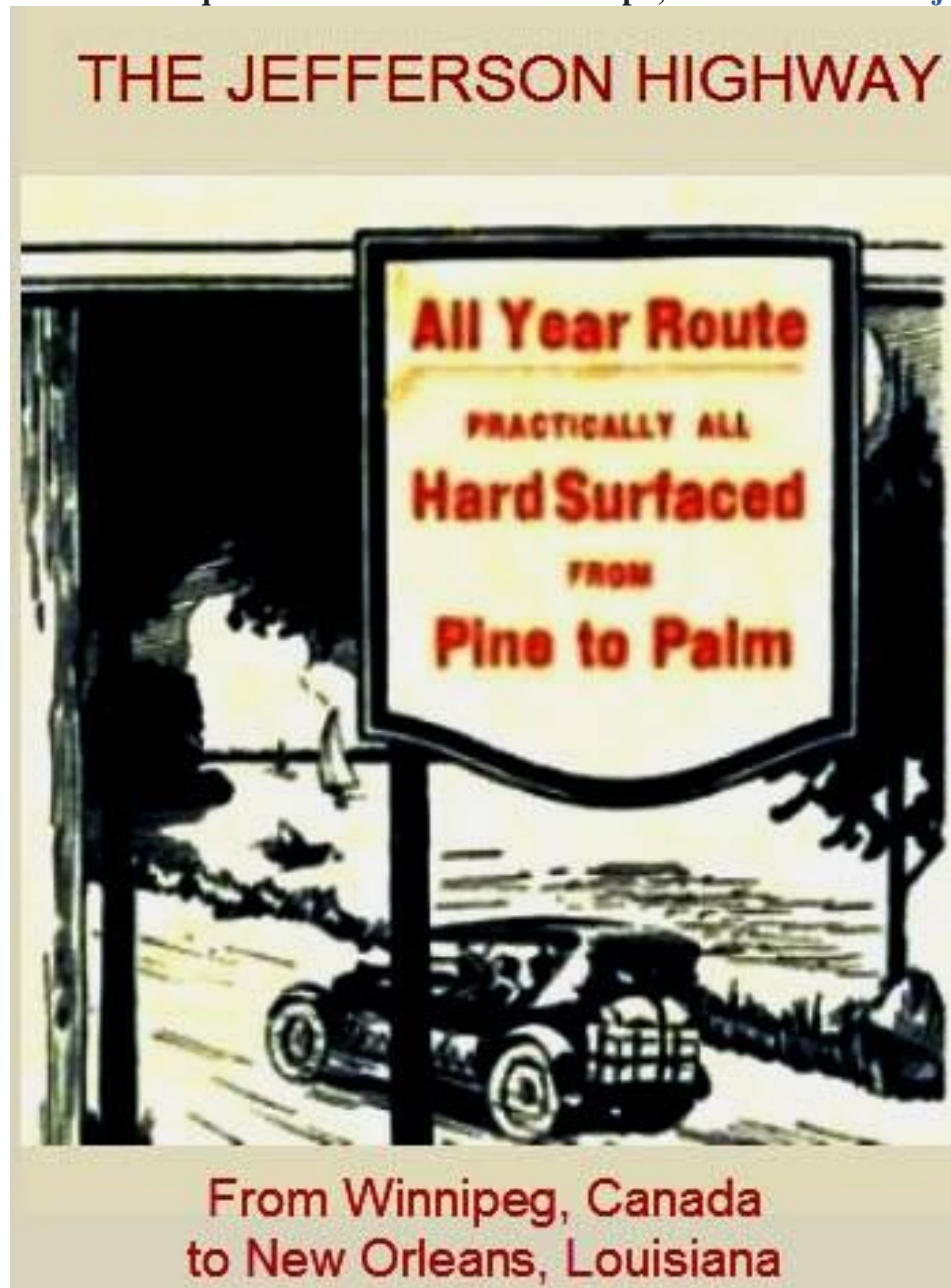


**Cheap gas**

Familiar is the Big Pump service station still in operation on South Main Street; however, prices are not the same. Those in the picture, provided by R.C. Carroll, Sheridan, were not identified.



Jefferson Highway Association State Officials - February 1920 -The seven states plus Manitoba, Canada.  
The JHA headquarters was located in St. Joseph, Missouri in 1920. #jha



Vintage Postcard - Aunt Jemima Mills -- courtesy of Terry McGinnis, St. Joseph, MO. Click on the photo for a larger view. #jha



## STATE OFFICIALS

---

### LOUISIANA

Vice-President—J. McW. Ford, Shreveport.  
Directors—Hon. J. W. Duncan, Colfax; Dr. W. A. Nabors, Mansfield; L. U. Babin, Baton Rouge; New Orleans Civic Members, E. R. Greenlaw, W. L. Snider.

### TEXAS

Vice-President—W. N. King, Denison.  
Directors—Sam R. Greer, Pittsburg; Fred Horton, Greenville; Theo. Wester, Sulphur Springs.

### OKLAHOMA

Vice-President—Hon. Paul Nesbitt, McAlester.  
Directors—H. H. Ogden, Muskogee; W. F. Dodd, Caddo; H. B. Campbell, Welch.

### KANSAS

Vice-President—H. A. Russell, Ft. Scott.  
Directors—E. B. Van Ness, Mound City; Paul Russell, Paola; Dr. H. P. Hatfield, Olathe; J. Luther Taylor, Pittsburg.

### MISSOURI

Vice-President—John M. Malang, Joplin.  
Directors—D. M. Gregg, Harrisonville; Hon. Geo. E. McIninch, St. Joseph; Hon. Ezra Frisby, Bethany.  
Civic Member, W. L. Connett, St. Joseph.

### IOWA

Vice-President—E. C. Harlan, Indianola.  
Directors—James F. Harvey, Leon; H. H. Shepard, Mason City; Paul Beer, Des Moines.

### MINNESOTA

Vice-President—J. H. Beek, St. Paul.  
Directors—Daniel Shaw, Thief River Falls; Hon. Thos. E. Cashman, Owatonna; J. K. Martin, Little Falls.  
Little Falls Civic Director, R. B. Millard.

### MANITOBA

Vice-President—Hon. T. H. Johnson, Winnipeg.  
Directors—J. H. Kane, St. Jean; L. D. Blasonnette, St. Joseph; Mayor Casselman, Emerson.





Old Town buildings in McAlester, Oklahoma. This is the historic Jefferson Highway through McAlester and many of these buildings were standing at that time and place. Photo courtesy of David Gaede, dated 2016. #jha



ALBERT LEA, MINNESOTA was a very active Jefferson Highway town during the early years of road building. #jha



Family Day Road Trip: 10 Things To Do in Albert Lea, Minnesota - Family Fun Twin Cities  
Bring your family and explore Albert Lea by playing at the splashpad in the aquatic center, take a tour on the Pelican Breeze II, or visit the Alpaca Farm.

<https://www.familyfuntwincities.com/10-things-to-do-albert-lea-minnesota/>



# A hot breakfast for 9 cents

**J**UST a few cents for coffee, butter-and-syrup spread pancakes and all!

And oh, how easy to make! Everything, even powdered sweet milk, comes ready mixed in the flour. Beat up with water and the butter's made - on the griddle with them and they're done; tender, golden-brown and rich with the real old southern flavor.

It's not often these days that anything so good costs so little. Ask your grocer for a package of Aunt Jemima Pancake Flour--and tell old nun H. C. L. to go jump in the lake!

*For variety, get a package of Aunt Jemima Pancake Flour at the same time.*



## AUNT JEMIMA PANCAKE FLOUR



Reg. U. S. Pat. Off.  
"E-e in them, Honey"



Bethany, Missouri is an active member of the Jefferson Highway Association and has a great history as part of this International highway. #jha

